

BARB FITTINGS



Product Code System

BCC 04-M5

BARB FITTINGS

TUBE DIAMETER

CODE SIZE

03 $\varnothing 3 \times \varnothing 2$

04 $\varnothing 4 \times \varnothing 2.5$

06 $\varnothing 6 \times \varnothing 4$

THREAD SIZE

CODE SIZE

M5 M5×0.8

01 R $\frac{1}{8}$

02 R $\frac{1}{4}$

Uses

- This product is used together with tubes in equipment that has been vacuum generated.

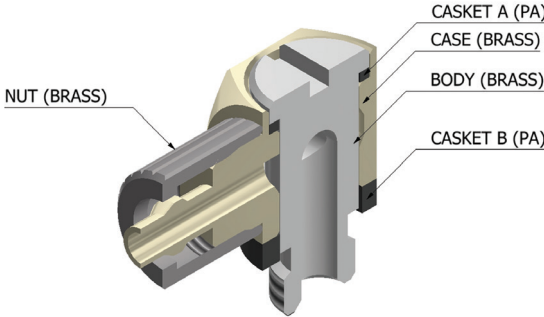
Features

- Compact product that can be used when piping in small spaces.
- Two-touch type can be installed without tools.
- Tubes made of PA and PU are available.
- The body is treated with electroless nickel plating.

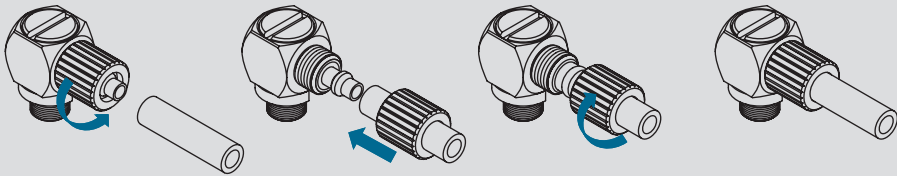
Specifications

Operating fluid	Air
Operating pressure	10Bar
Vacuum pressure	-100kPa
Operating temperature range	-5 ~ 60℃

Structural drawing



Example of uses



CAUTIONS

- Do not arbitrarily modify product.
- Barb fitting product line should not be used for water.

BCC



MODEL(T)
Thread M
BCC 04M5
BCC 06M5
BCC 0401
BCC 0601

BCLL



MODEL(T)
Thread M
BCLL 04-M5
BCLL 04-M5

BCL



MODEL(T)
Thread M
BCL 04-M5
BCL 06-M5

BP



MODEL(T)
Thread M.R
BP M5
BP 01
BP 02

BHC



MODEL(T)
Thread M
BHC 04-M5
BHC 06-M5

BHLL



MODEL(T)
Thread M
BHLL 03-M5
BHLL 04-M5
BHLL 06-M5

BHL



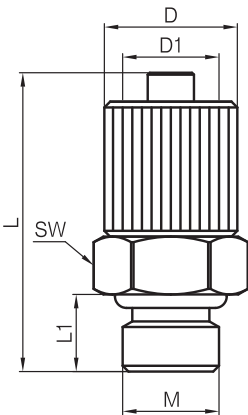
MODEL(T)
Thread M
BHL 03-M5
BHL 04-M5
BHL 06-M5



BARB FITTINGS 바브피팅

www.cdcpneumatics.com

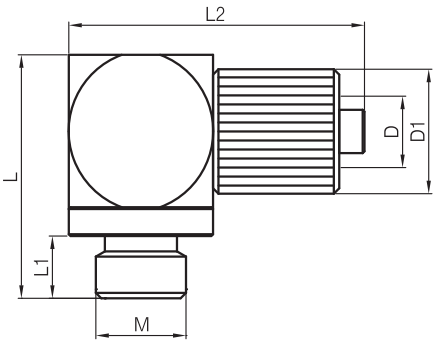
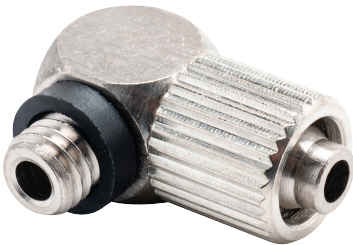
BARB FITTINGS
BCC



단위: 밀리미터(mm)

MODEL	D(TUBE)	M	L	L1	D	SW	W.G(g)	BOX(EA)
BCC 04M5	4×2.5	M5×0.8	15.5	3.5	6.7	7	3.0	100
BCC 06M5	6×4	M5×0.8	16.5	3.5	8.5	8	4.1	100
BCC 0401	4×2.5	R1/8	20	7.5	7.5	10	6.4	100
BCC 0601	6×4	R1/8	20.5	8	9	10	7.2	100

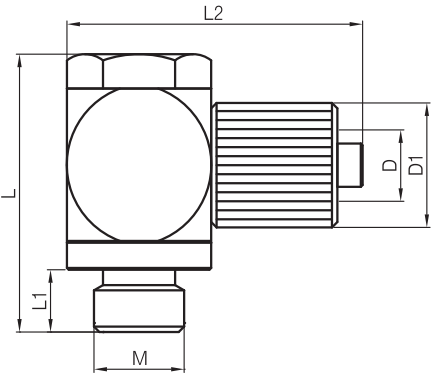
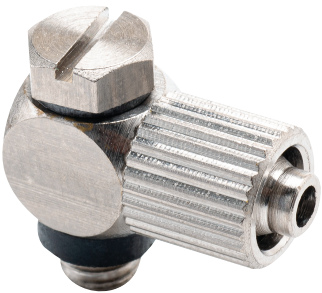
BARB FITTINGS
BCL



단위: 밀리미터(mm)

MODEL	D(TUBE)	M	L	L1	L2	D1	W.G(g)	BOX(EA)
BCL 04-M5	4×2.5	M5×0.8	11.5	3.5	17.5	7.5	5.5	100
BCL 06-M5	6×4	M5×0.8	13.5	3.5	22.3	9.5	6.5	100

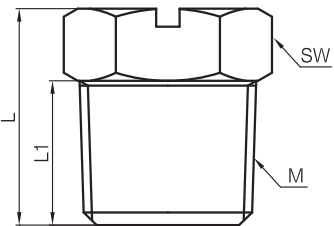
BARB FITTINGS
BCLL



단위: 밀리미터(mm)

MODEL	D(TUBE)	M	L	L1	L2	D1	W.G(g)	BOX(EA)
BCLL 04-M5	4×2.5	M5×0.8	15.4	3.2	15.5	6.7	5.0	100
BCLL 04-M5	6×4	M5×0.8	16.4	3.2	17.5	8.5	7.2	100

BARB FITTINGS
BP



단위: 밀리미터(mm)

MODEL	M	L	L1	SW	W.G(g)	BOX(EA)
BP M5	M5×0.8	7	3.5	8	1.9	100
BP 01	R1/8	12	8	10	5.0	100
BP 02	R1/4	17	11	14	13.2	100

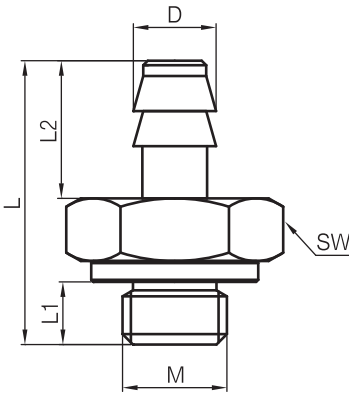
BARB FITTINGS

바브피팅

www.cdcpneumatics.com

BARB FITTINGS

BHC

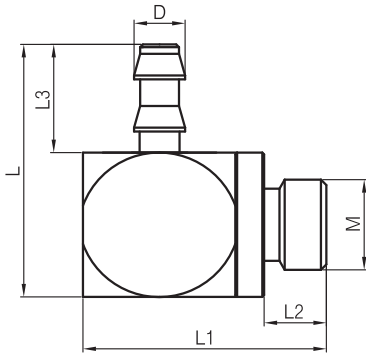


단위: 밀리미터(mm)

MODEL	D(TUBE)	M	L	L1	L2	SW	W.G(g)	BOX(EA)
BHC 04-M5	4×2.5	M5×0.8	11.5	3.5	5	7	1.6	100
BHC 06-M5	6×4	M5×0.8	13.5	3.5	7	7	2.0	100

BARB FITTINGS

BHL

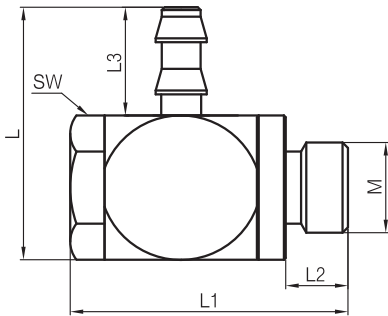


단위: 밀리미터(mm)

MODEL	D(TUBE)	M	L	L1	L2	SW	W.G(g)	BOX(EA)
BHL 03-M5	3×2	M5×0.8	13	12	3.5	5	4.0	100
BHL 04-M5	4×2.5	M5×0.8	13	12	3.5	5	4.4	100
BHL 06-M5	6×4	M5×0.8	13	12	3.5	7	4.8	100

BARB FITTINGS

BHLL



단위: 밀리미터(mm)

MODEL	D(TUBE)	M	L	L1	L2	L3	SW	W.G(g)	BOX(EA)
BHLL 03-M5	3×2	M5×0.8	14	16	3.5	6	7	5.0	100
BHLL 04-M5	4×2.5	M5×0.8	14	16	3.5	6	7	5.3	100
BHLL 06-M5	6×4	M5×0.8	15	16	3.5	7	7	5.5	100

BARB FITTINGS

바브피팅

