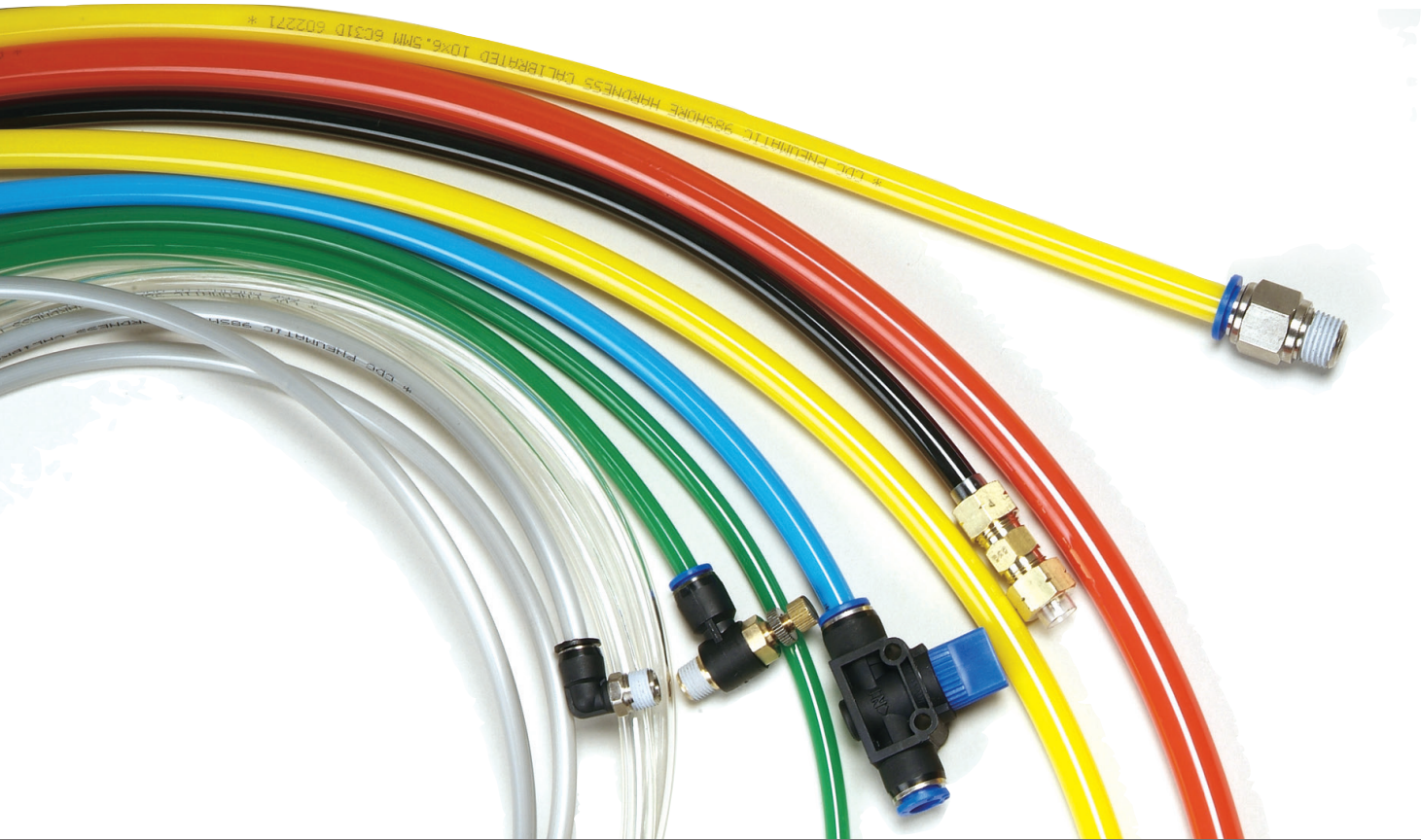


POLYURETHANE TUBE / POLYETHYLENE TUBE / NYLON TUBE / COIL TUBE

Company that dreams of Affluent Tomorrow and Technology  
that considers the Environment and the Future - CDC Pneumatic



TUBES



Product Code System

POLYURETHANE TUBE

PU 08 50 BK

POLYURETHANE TUBE

TUBE DIA (O.D & I.D.)

METRIC TUBE			INCH TUBE	
CODE	O.D	I.D	CODE	O.D
0320	Ø3	Ø2	1/8	1/8"
0420	Ø4	Ø2	3/32	3/32"
0425	Ø4	Ø2.5	3/16	3/16"
0640	Ø6	Ø4	1/4	1/4"
0850	Ø8	Ø5	5/16	5/16"
0855	Ø8	Ø5.5	3/8	3/8"
1065	Ø10	Ø6.5	1/2	1/2"
1280	Ø12	Ø8		
1290	Ø12	Ø9		
1611	Ø16	Ø11		
1612	Ø16	Ø12		

TUBE COLOR

COLOR	CODE
White	WT
Black	BK
Red	RD
Blue	BU
Yellow	YL
Green	GN
Clear	CR
Translucent Blue	TB
Silver	SL

POLYURETHANE COIL TUBE

UC 08 50 - 5 BK

POLYURETHANE COIL TUBE

TUBE DIA (O.D & I.D.)

METRIC TUBE		
CODE	O.D	I.D
0640	Ø6	Ø4
0850	Ø8	Ø5
1065	Ø10	Ø6.5
1280	Ø12	Ø8

LENGTH

TUBE COLOR

COLOR	CODE
Yellow	YL
Blue	BU
Black	BK

Uses

- Applicable for piping of various pneumatic devices.

Features

- Flexible at low temperatures.
- Light weight, excellent abrasion and chemical resistance, low price.
- More flexible than nylon tubes for easier piping work.
- Possible to select various colored tubes and use according to the work environment.

Specifications

Applicable fluid	compressed air (Not applicable to gases or liquids)
Operating pressure	0 ~ 150PSI / 0 ~ 9.9kgf/cm <sup>2</sup> (0 ~ 990kPa).
Negative pressure	-29.5in Hg / -750mmHg(-750Torr)
Operating temperature range	32 ~ 140°F / 0 ~ 60℃

Structural drawing

Example of uses

- If the tube is forcibly pulled or folded after piping work is completed, it will adversely affect the product. Please refer to the radius of curvature below to proceed with the work.

PU Minimum bending radius at 23℃ (mm)

Tube size	Ø3	Ø4	Ø6	Ø8	Ø10	Ø12	Ø14	Ø16
Bending radius	8	12	15	20	25	35	45	50

Tube size	Ø1/8	Ø5/32	Ø3/16	Ø1/4	Ø5/16	Ø3/8	Ø1/2
Bending radius	8	12	12	15	20	25	35

TUBE COLOR

COLOR	White	Black	Red	Blue	Yellow	Green	Clear	Silver	Translucent Blue
CODE	WT	BK	RD	BU	YL	GR	CL	SL	TB

CAUTIONS

- Make sure that the tube is pushed to the end of the fitting before using it. Otherwise, air may leak and the tube may fall out.
- When mounting the tube to the fitting, cut the tube at right angles and insert it inside. Make sure the tube does not fall out when gently pulled.
- Give some allowance when piping a tube, taking into account length change in the future.
- Where the tube may fall out to cause damage to people or property, be sure to fix in place.

WARNINGS

- Do not use for fluids other than air and water (in the case of some products only). If needed for other fluids, please contact us beforehand.
- Check the tube for oval shape, damage to the outside diameter, or scratches. They may cause air leakage or tube falling out.
- Do not use for hot fluids such as water above 60℃. Heat and hydrolysis of tube materials may cause problems, including tube deformation.
- Do not apply in places where spatters occur. High fire risk caused by spatters.
- Tube may be destroyed by surge pressure when used in water.
- Do not apply in direct contact with liquids, such as cutting oil, lubricating oil, or coolant oil.
- Do not use in places where static electricity occurs or antistatic finishing is provided.
- Inappropriate for activated gases such as oxygen, hydrogen, and LPG. Do not use.

98 www.cdc pneumatics.com

CDP PNEUMATICS 99

Tubes

PU

Polyurethane tube

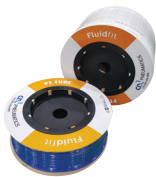


MODEL(Outer·Inner)

Tube <b>Metric</b>		Tube <b>Inch</b>
PU 0320	PU 1065	PU 1/8
PU 0420	PU 1280	PU 5/32
PU 0425	PU 1290	PU 3/16
PU 0640	PU 1410	PU 1/4
PU 0850	PU 1612	PU 5/16
PU 0855		PU 3/8
		PU 1/2

PE

Polyethylene tube

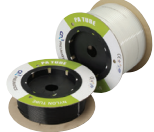


MODEL(Outer·Inner)

Tube <b>Metric</b>	Tube <b>Inch</b>
PE 0425	PE 5/32
PE 0640	PE 3/16
PE 0860	PE 1/4
PE 1070	PE 5/16
PE 1290	PE 3/8
	PE 1/2

PA

Polyamide tube



MODEL(Outer·Inner)

Tube <b>Metric</b>
PA 0420
PA 0425
PA 0640
PA 0860
PA 1008
PA 1209

ETC

Tube Cutter



MODEL

ETC-20
--------

SCPW



MODEL

SCPW 06
SCPW 08
SCPW 10
SCPW 12

UC

Coil tube

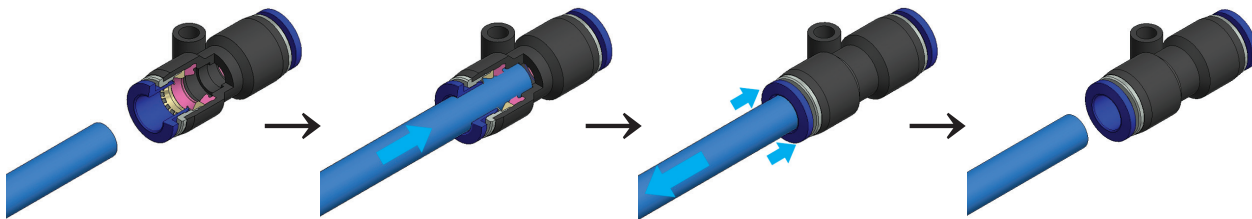


UC C



Tube <b>Metric</b> -Meters		MODEL(Outer·Inner·Length)
w/o coupler		with coupler
UC 0640-3	UC 1065-10	UC 0850-5
UC 0640-5	UC 1280-5	UC 0850-7.5
UC 0640-7.5	UC 1280-7.5	UC 0850-10
UC 0640-10	UC 1280-10	UC 1065-5
UC 0850-5		UC 1065-7.5
UC 0850-7.5		UC 1065-10
UC 0850-10		UC 1280-5
UC 1065-5		UC 1280-7.5
UC 1065-7.5		UC 1280-10

Tube connecting method



Preparation

Prepare tube for application and a tube cutter and fitting connecting tool (spanner or wrench).

Cutting of tube

Cut the tube perpendicular to the axial direction using a tube cutter.

Connect with fitting

Using a spanner or wrench, tighten firmly within the recommended tightening torque range below.

Inserting of tube

Mark the tube insertion length on the tube and insert in a straight line relative to the fitting body. Now check whether the marking position is in the open sleeve section.